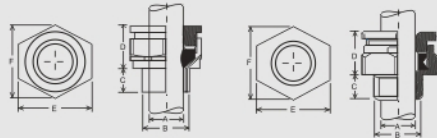


**Brass Extruded  
Cable Glands : Type A1/A2**

**Application :**  
For most indoor and outdoor applications

**Function :**  
Suitable for unarmoured, plastic or rubber sheathed cables



- Standard** : BS 6121: Pt 1
- Mechanical** : Provides retention of armour or braid
- Size** : A1/A2 16 to 110
- Material** : BS 2874 (Cz121) Brass
- Finish** : Matt / Nickel
- Gasket kits** : Seal rated to IP66  
: A1/A2 Gland, Shrouds, Locknut and Earth tag



Cable Dimensions Accommodated		Gland Reference		Gland Dimensions						Accessories	
Overall Dia. A		Size	Design No.	ISO Entry Thread		Approx. Length From Shoulder	Hexagon Size Across		Brass Backnut Design No.	Shroud Design Number	
Min mm	Max. mm			Dia. B Mm	Length C mm	D mm	Flats E mm	Corners F mm		Pvc	Pcp
3.5	8.5	16	CCW 51	16	10	20	19.0	21.5	CC 51	CPV 01	-
3.5	8.5	20SS	CCW 71	20	10	20	19.0	24.9	CC 53	CPV 01	PCP 02
8.0	11.5	20S	CCW 52	20	10	22	20.6	24.9	CC 53	CPV 01	PCP 02
11.0	13.5	20	CCW 53	20	10	22	20.6	24.9	CC 53	CCV 02	PCP 02
13.0	19.5	25	CCW 55	25	10	25	30.5	34.0	CC 55	CCV 23	PCP 03
19.0	25.5	32	CCW 56	32	10	25	41.0	45.5	CC 56	CCV 50	PCP 05
25.0	32.0	40	CCW 57	40	15	33	47.0	53.3	CC 57	CCV 26	PCP 06
31.0	37.0	50S	CCW 58	50	15	30	55.0	60.0	CC 59	CCV 07	PCP 07
36.5	43.0	50	CCW 59	50	15	30	56.4	61.5	CC 59	CCV 07	PCP 07
42.5	50.0	63S	CCW 60	63	15	34	70.1	77.2	CC 61	CCV 09	PCP 09
49.5	55.0	63	CCW 61	63	15	32	75.0	83.0	CC 61	CCV 11	PCP 11
54.5	61.0	75S	CCW 62	75	15	32	80.0	87.4	CC 63	CCV 11	PCP 11
60.5	67.0	75	CCW 63	75	15	40	85.0	95.0	CC 63	CCV 12	PCP 11
65.0	78.0	90	CCW 65	90	20	45	106.0	117.0	CC 65	CCV 34	PCP 13
75.0	88.0	100	CCW 66	100	20	45	115.0	126.0	CC 66	CCV 34	-
79.0	99.0	110	CCW 67	110	20	55	-	132.0	CC 67	CCV 36	-